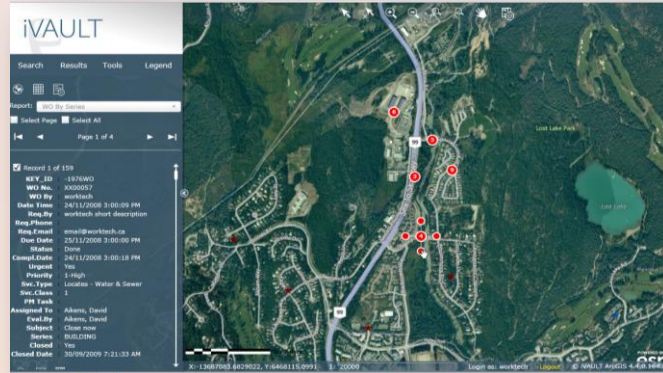


iVAULT WorkTech Integration

iVAULT is a web-based GIS application that consists of a core web and administration module with add-on modules for data editing and integration to existing asset management, finance and permitting applications. iVAULT was designed to add functionality to the Esri ArcGIS Server, Autodesk MapGuide and Google Maps. iVAULT provides administrative tools that allow organizations to easily configure internal, consultant and external sites with ease.



iVAULT allows call takers, managers and maintenance staff to see locations of work on maps and to produce printed work reports with maps.

The iVAULT WorkTech Integration allows WorkTech users to see the location of work orders and assets on maps. It also provides all iVAULT users in the organization with access to WorkTech asset and work order information.

Benefits

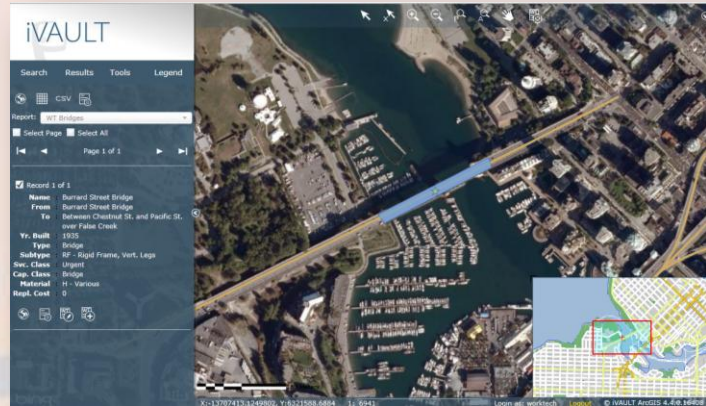
The integration contains the following functionalities:

- iVAULT users in an organization have access to information about assets and work orders managed by WorkTech to support analysis
- Embedding a GIS snapshot in the work order report with the location of the work order displayed
- WorkTech users with iVAULT integration can:
 - Zoom to the map to display the location of an asset or work order.
 - Display asset information in iVAULT, with data flowing from WorkTech.
 - Edit asset information using data entry forms.
 - Add a new work order for an asset or for a location selected on the map.
 - Display the work order browse list for a selected asset.
 - Edit work order details for a work order selected on the map with the work order series auto-populated based on the layer.
 - Embed a GIS snapshot in the work order report with the location of the work order displayed.

Contact us: 1.604.676.6000 / Toll-free: 1.877.691.9171 • sales@pat.ca •
www.pat.ca • ivault.pat.ca
Schedule a demo today: events@pat.ca

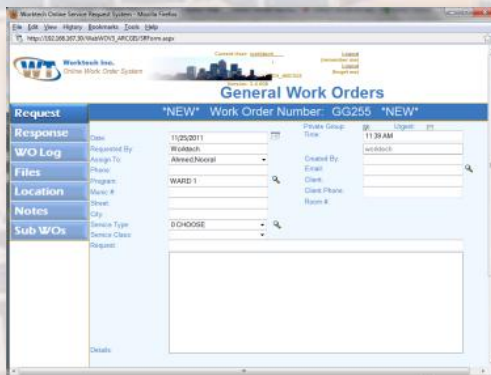
WorkTech's Asset Manager Foundation

This application houses an inventory of roads, bridges, culverts, manholes, sewers, facilities and any number of asset types. Within the iVAULT application users can search for and select assets on a map and view associated asset information in the results panel coming directly from the WorkTech database.



Asset information can be edited from within the GIS environment using edit forms.

iVAULT users can also add new work orders and edit existing work orders from within the GIS environment and create printable reports from the WorkTech database.



Contact us: 1.604.676.6000 / Toll-free: 1.877.691.9171 • sales@pat.ca • www.pat.ca • ivault.pat.ca
Schedule a demo today: events@pat.ca

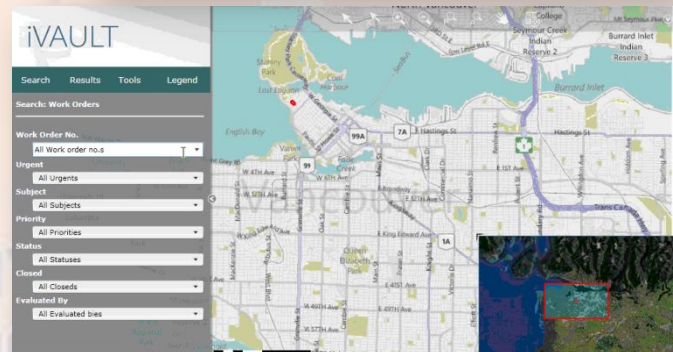
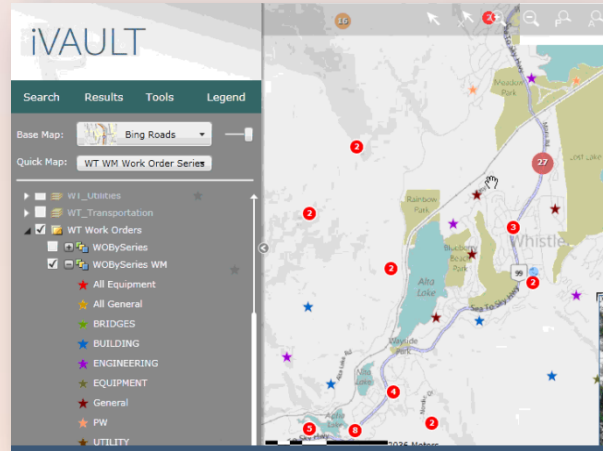
WorkTech's Work Manager Foundation

This application enables job, activity and object code costing; solid integration to your core financial accounting modules; and advanced cost reporting and accomplishment- tracking capabilities.

Within the iVAULT application users can search work orders and view the associated database values in the results panel coming directly from the WorkTech database.

iVAULT users can select a work order symbol, street segment, water pipe, storm sewer or other asset on a map and on WorkTech forms to list existing work orders and display work order information.

All the work orders can be viewed and managed through the iVAULT/WorkTech integration, helping the organization save time and increase asset management capacity.



Work Order No.	Series	Service Type	Service Class	Subject	From_Maint_Tank	Status	Work Order By	Due Date	Date Time	Required By	Required By Phone	Required By Email	Urgent	Assigned To
8800003	BRIDGES	Bridge Surface Discontinuity	Urgent	Dangerous Pot Hole		Open	worktech	11/17/2009	11/26/2009	WorkTech	905-309-6054	team@worktech.ca	Yes	Murray, Scott

Within iVAULT, display all work orders on the map and their statuses. The users are able to select all work orders at a given location and generate printable work order reports showing work order details and a location map. They may also display selected work order details in a table, or export them to Excel.

About Pacific Alliance Technologies

Pacific Alliance Technologies (PAT) is a leading provider of GIS, web-based mapping, architectural, and engineering software, specializing in the customization, implementation, training and support of these solutions. The company's mission is to develop and implement proven solutions that will help sharpen your competitive edge and increase your organization's productivity.

Pacific Alliance provides WorkTech products, developed by our sister company within the StarDyne Technologies Group, as part of a sustainable, effective and efficient enterprise asset management solution. iVAULT is integrated with our StarDyne sister companies' software, including Diamond, WorkTech, Vadim, Tempest – along with other leading financial and asset management software products.

iVAULT is PAT's web-based mapping solution that allows organizations to easily benefit from linking their existing data to a location. iVAULT is compatible with leading technologies, including ArcGIS, MapGuide and Google. With iVAULT you can visually see the asset you are managing, adding value to your business processes.

About WorkTech Inc.

WorkTech Inc. develops, supports and deploys robust work, asset and service management software applications for the public sector. Equipped with thorough technological and vertical market knowledge, the company delivers advanced solutions in the areas of infrastructure maintenance planning and execution, job and project costing, and financial systems interfaces.

WorkTech Inc.'s consulting expertise qualifies it to provide the necessary needs assessment, system configuration and business process optimization services that are essential for the successful implementation of a fully integrated asset management system. Customers nationwide bear witness that when the total cost of ownership of the WorkTech Inc. solution is weighed against the tangible benefits they have reaped from its utilization, the return on investment is unequalled. For more information, visit www.worktech.ca.

**Contact us: 1.604.676.6000 / Toll-free: 1.877.691.9171 • sales@pat.ca •
www.pat.ca • ivault.pat.ca
Schedule a demo today: events@pat.ca**