

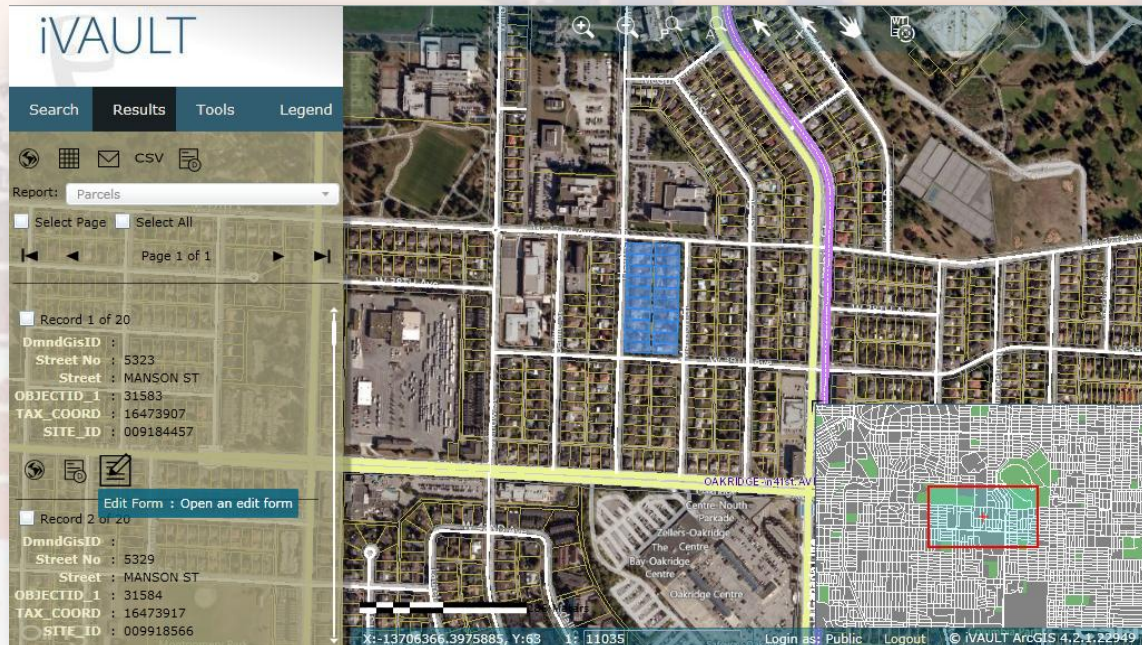
iVAULT for ESRI ArcGIS 10 (Silverlight)

iVAULT brings easy site configuration to ESRI ArcGIS Server 10. Using the iVAULT Administrator module, companies can develop a personalized web GIS and easily publish it online to the iVAULT web portal using the Silverlight API.

The iVAULT Administrator provides a suite of tools to allow companies to configure all aspects of their web GIS, including the site design and layout, access and security, maps and databases, and searches and tools. With over 100 configurable features in the Administrator, iVAULT is the software of choice for many organizations across North America.



The iVAULT web portal is an easy-to-use and visually appealing front end to your web GIS application. The iVAULT web interface provides users with the ability to search data from many sources, view database attributes in the results panel, interact with spatial layers in the legend and report, query and analyze spatial and non-spatial data through a series of custom tools.



Contact us: 1.604.676.6000 / Toll-free: 1.877.691.9171 • sales@pat.ca •
www.pat.ca • ivault.pat.ca
Schedule a demo today: events@pat.ca

Benefits of iVAULT ArcGIS:

- Customizable interface allows companies to promote their brand, logo and colors
- Windows Active Directory integration facilitates access to web GIS for internal users
- One iVAULT ArcGIS license gives internal and external/public access to WebGIS
- Custom login page contains secure 128bit SSL encryption
- Open architecture to facilitate integrations with multiple maps, databases and applications
- Easy to configure searches to allow users to view attribute information for spatial features
- Custom print and reporting templates
- Data can be edited through a web-browser using iVAULT Edit
- Users can configure their own reports within the custom report generation
- Includes a series of rigorously maintained base maps including the latest orthophoto from Bing
- The iVAULT Administrator makes site configuration and publishing as easy as point and click. No developers required!

What's included?

1. Software assurance:

- Upgrades to the latest versions
- Service level agreement (99.9% guaranteed uptime) - when PAT provides the hosting
- Backing by PAT's technical support team
- Online usage reports to track your map page views

2. Implementation Service

Either implement iVAULT ArcGIS on your own, with the backing of our documentation and helpdesk, or we can quick-start your initial configuration, which includes:

- Implementation of your data layers presented on a map
- Configuration of your integrated and searchable tabular data sets
- Development of custom reports

Learn more by visiting <http://ivault.pat.ca> to:

- See what our clients are saying about us
- Learn about our hosting service to either host iVAULT in our environment or in a cloud
- Request a demonstration
- Sign-up for an upcoming webinar

Contact us: 1.604.676.6000 / Toll-free: 1.877.691.9171 • sales@pat.ca • www.pat.ca • ivault.pat.ca
Schedule a demo today: events@pat.ca

iVAULT System Architecture

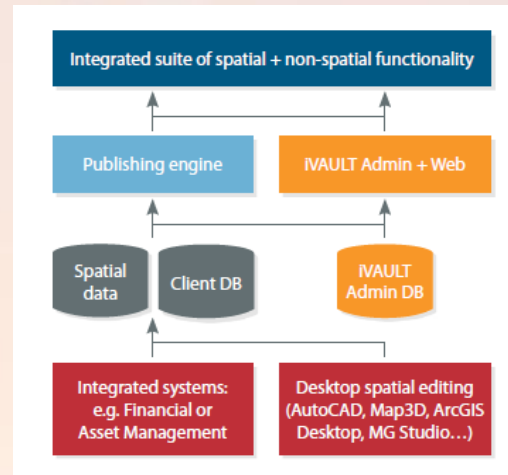
Easy Integration - iVAULT's open architecture makes it easy to design and configure components. With iVAULT, you can leverage existing data sets and systems to minimize implementation and training costs. No programming skills required.

Open Approach - iVAULT is compatible with leading technologies: ArcGIS Server, MapGuide, Microsoft SQL Server and Oracle—allowing you to use your data and systems in their existing structure.

Cross-Platform Support - Access your data with any industry-standard web-browser.

From scalable architecture to easier navigation for non-GIS users, iVAULT provides great value to our user base.

iVAULT was designed from the ground up to provide simplicity for business workflows. Since its inception in 2002, iVAULT has migrated through various iterations of software technology to become one of the most configurable and open web mapping applications available.



iVAULT driven by technology and passion

About Pacific Alliance Technologies

The Pacific Alliance team has worked hard over the years to ensure that we understand what our users want in a web mapping application. With its roots in telecommunications, iVAULT now serves a variety of business sectors from oil & gas to local government. This evolution has required the team to focus on understanding how each user requirement can be implemented in a generic way, while keeping it simple and user-friendly.



iVAULT is PAT's web-based mapping solution that allows organizations to easily benefit from linking their existing data to a location.

Our clients benefit by reducing the investment required to build a spatial portal, so they can focus on their business and reduce their costs. This has been proven time and time again. As a result, our long term clients now have some of the best quality enterprise data in the market.

Contact us: 1.604.676.6000 / Toll-free: 1.877.691.9171 • sales@pat.ca •
www.pat.ca • ivault.pat.ca
Schedule a demo today: events@pat.ca